



30 November 2017, Pretoria

Southern Africa – Towards Inclusive Economic Growth (SA-TIED)

Introduction to SA-TIED

- Regional growth and development in Southern Africa (2014-2016)
 - NT and UNU-WIDER successfully collaborated on making new data available, which opened up for new approaches and policy formulation.
 - Research emphasized growth and development in South Africa and within the region.
 - Research and policy recommendations presented in December 2016

'Growth and development policy; New data, new approaches, and new evidence'

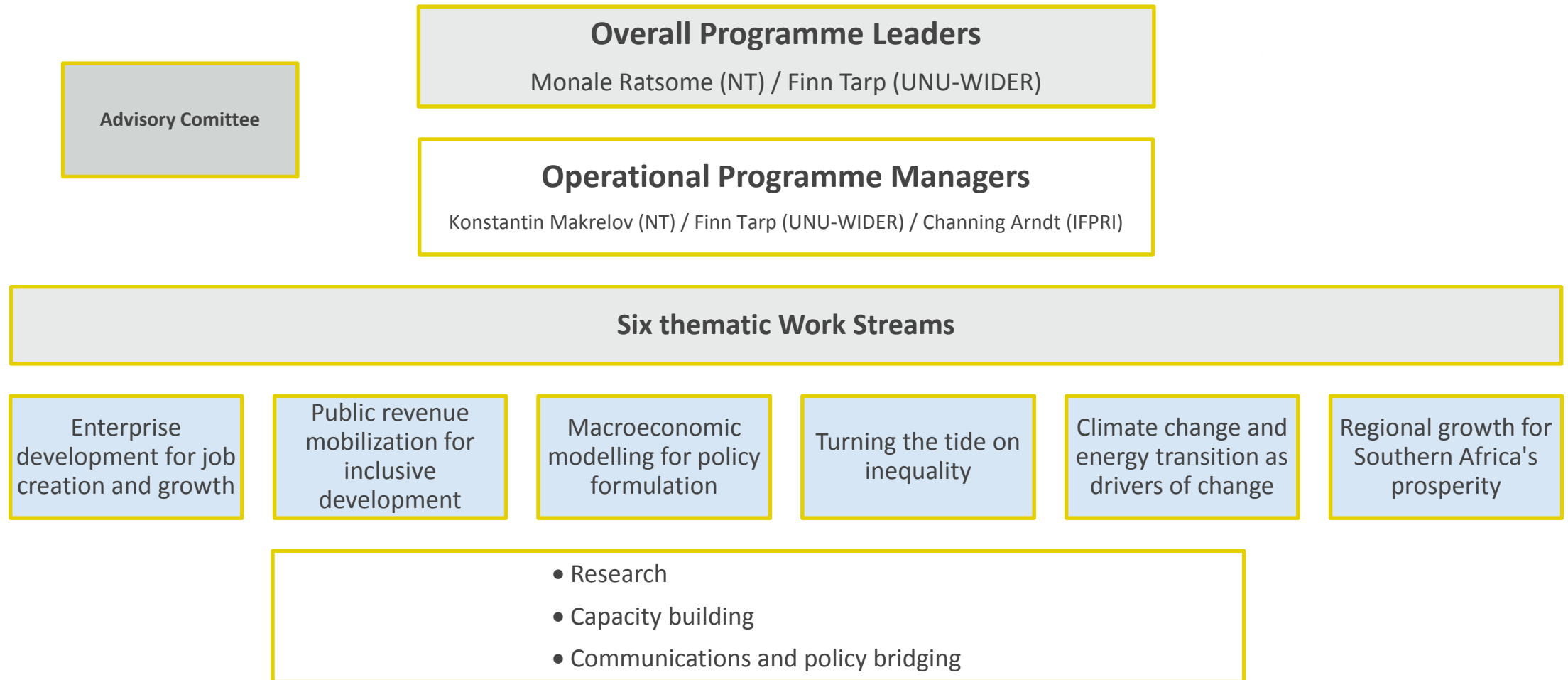
- [Part 1, South Africa](#) and [Part 2, Southern Africa](#)

Introduction to SA-TIED

Southern Africa – Towards Inclusive Economic Growth (SA-TIED)

- Three-year programme, 2017 – 2020
- Scaling up and expanding collaborative efforts
 - UNU-WIDER, IFPRI, NT, TIPS, SARS, dti, and DPME
- Focus will remain maintained on:
 - High-quality and policy-relevant research
 - Capacity building in Southern Africa
 - Support in policy formulation

Organizing SA-TIED



Organizing SA-TIED

- WS1:** Enterprise development for job creation and growth // John Rand, Carol Newman, Duncan Pieterse
- WS2:** Public revenue mobilization for inclusive development // Jukka Pirttilä, Mamiky Leolo
- WS3:** Macroeconomic modelling for policy formulation // Laurence Harris, Ian Stuart
- WS4:** Turning the tide on inequality // Murray Leibbrandt, Catherine MacLeod
- WS5:** Climate change and energy transition as drivers of change // Channing Arndt, Ashraf Kariem
- WS6:** Regional growth for Southern Africa's prosperity // John Page, Nigel Gwynne-Evans

SA-TIED outcomes and results

- 150 research studies across the six work streams
- Invest in and build individual and institutional capacities
 - Research collaborations; co-authoring of papers; capacity building of junior staff; improved collection and management of public data for research purposes
- Dedicated efforts to bridge research and policy
 - Policy briefs; policy dialogs with government stakeholders; Project meetings, seminars, and conferences

SA-TIED communications

- Outreach and uptake are key component
- Dedicated webpage to be launched end February
- Strong on across various channels: social media, newsletters, repositories

Twitter:

- [@UNUWIDER](#) (60.4k fws)
- [@TreasuryRSA](#) (21k fws)
- [@IFPRI](#) (73k fws)

Newsletters:
WIDERAngle
GTAC WhatsUp
Insights (IFPRI)