

# **The links among violence, inequality and productivity in Latin America and the Caribbean**

## **The case of Bogotá, Colombia**

**-Diana Rodríguez Franco  
October 5th, 2022**

# Services and access to justice for victims of domestic violence

24/7-hour services and strengthened channels for complaints



Purple hotline

20.027 calls with  
over 96% of  
effectiveness



Purple hotline  
(whatsapp)

+34.346  
conversations



Sign language  
services

Videocalls  
to the Purple line

Secretary's lawyers  
and advocates in  
11 Hospitals

7.721  
services

Psychological  
and legal duos

1.508  
services

6 Emergency  
shelters

402 women with 428  
companions.

Legal and psychological aid

(orientation and pro bono legal representation)

10.948 services

"Casa de Todas"

2.247  
Services



Houses of  
opportunities  
(CIOM)

64.764  
Services

Justice center  
services

3.494  
Services

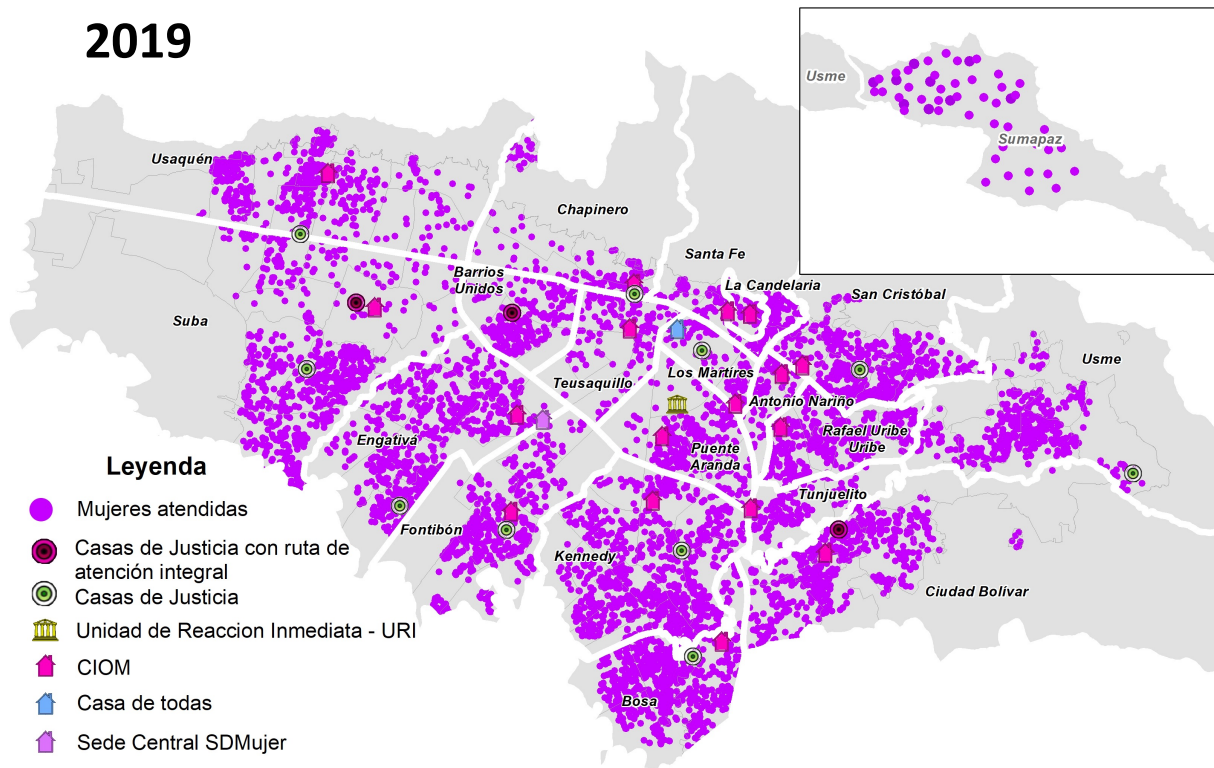
Permanent member of  
the city's weekly  
security council



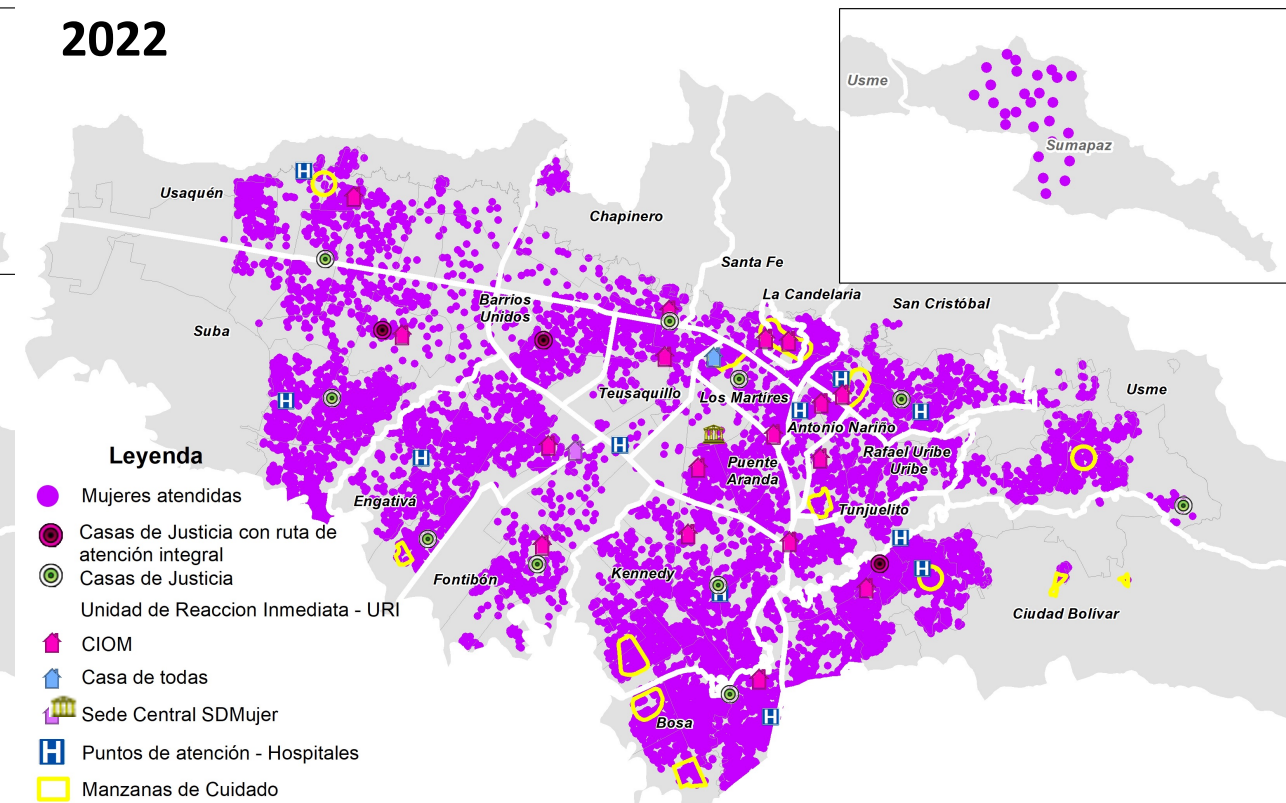
# Services provided by the Secretary: domestic violence

## January - August

2019



2022



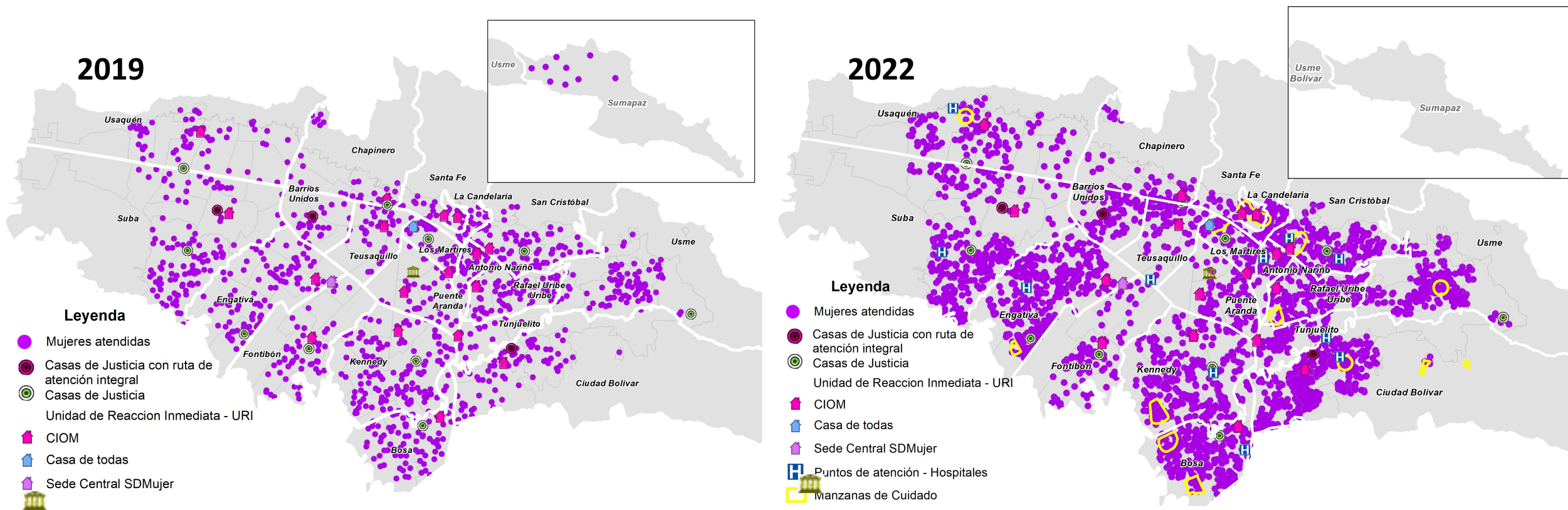
**INCREASE IN SERVICES : 59%**

**2019: 15,749**

**2022: 25,119**

SOURCE: SiMisional. Cálculos OMEG. Información preliminar sujeta a cambios por actualización. \*Se define como violencia intrafamiliar la atención que donde se declara a una persona familiar, pareja o expareja como presunta persona agresora sin incluir violencia sexual.

# Services provided by the Secretary: Sexual violence january- August



INCREASE IN SERVICES : 158%

2019: 2,370

2022: 6,104



# What is the Care System?

The care system articulates services to address care demands in a shared-responsible manner between the city government, the national government, the private sector, communities and households, to balance the provision of care, so caregivers have time to pursue personal development, self-care, well being, income generation and get involved in political participation.

## Objectives

**R**ecognize  
the contribution of  
caregivers

**R**edistribute  
responsibility more  
equitably between  
women and men;  
and

**R**educe  
Unpaid Care  
Work



## Beneficiaries

### CAREGIVERS

- EDUCATION
- WELL-BEING
- INCOME GENERATION

---

### CHILDREN UNDER 13 YEARS OLD

### ELDERLY WHO REQUIRE CARE

### PERSONS WITH DISABILITIES WHO REQUIRE CARE

---

- PROFESSIONAL CARE AND PLAYFUL ACTIVITIES

### MEN AND FAMILIES

- WORKSHOPS FOR CULTURAL CHANGE

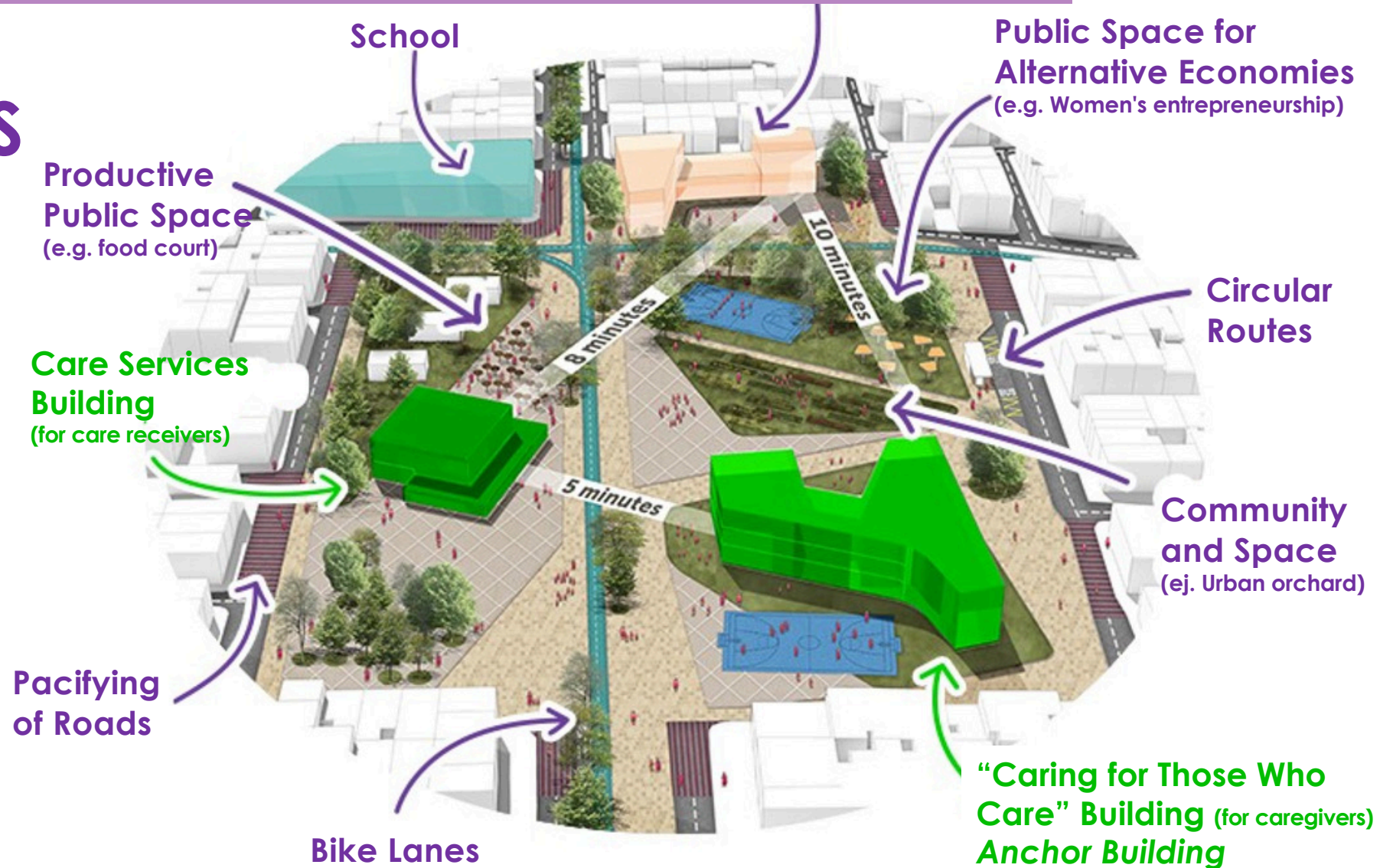


# Simultaneity+ Proximity+ Flexibility



They *simultaneously* provide professional care to those needing it, and educational and leisure opportunities for caregivers whose time is freed up.

For example, while a caregiver enrolls in a program to finish high school, her grandchild can participate in playful activities and her son with disabilities in physical activity.



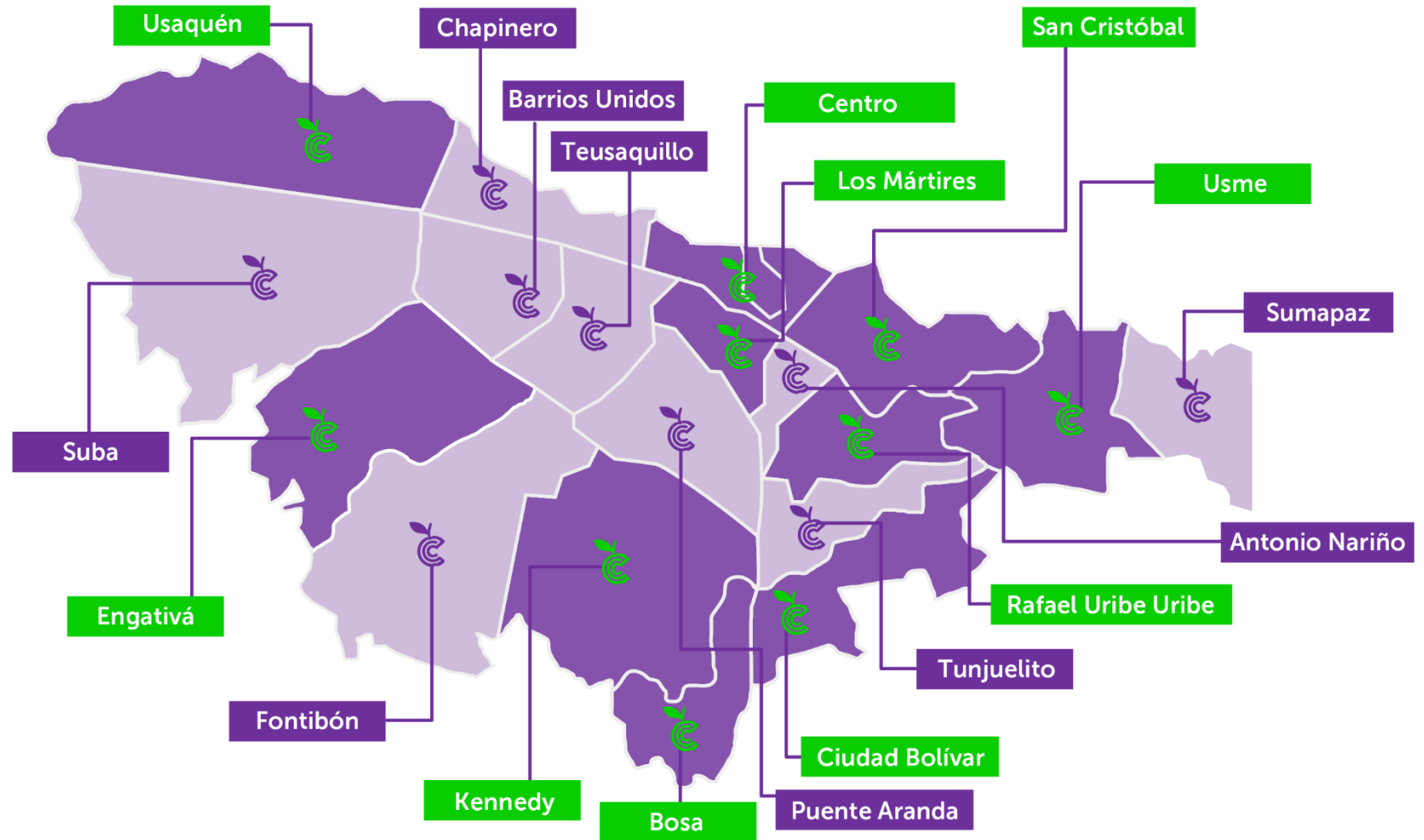


# ARE BUSES



# Our goal

20 care blocks



Development  
Plan Goals

20

Open and launch  
20 care blocks

12 Opened

12

3 to be opened  
in 2022

3

6 to be  
launched in  
2023

6

2 Care Buses

12

+

+

&