



SOCIAL PROTECTION

IMPACT ASSESSMENT FOR SOCIAL PROTECTION ANALYSTS

21 OCTOBER – 1 NOVEMBER 2019
TURIN, ITALY



Food and Agriculture Organization of the United Nations



IMPACT ASSESSMENT FOR SOCIAL PROTECTION ANALYSTS

OVERVIEW

SNAPSHOT OF THE COURSE

Impact assessment is a central component of the social protection policy planning process. It is key for identifying gaps and weaknesses in existing social protection provision, and is a valuable tool for evaluating the potential impact of proposed initiatives. This course aims to equip participants with the skills to dynamically assess the effectiveness and efficiency of social protection systems as they evolve over time. The course will be centred around the use of administrative and household survey data for the purpose of impact assessment of social protection systems, while also introducing participants to key considerations in the design of scheme-specific impact evaluations.



PLACE
TURIN, ITALY



DATES
**21 OCTOBER –
1 NOVEMBER 2019**



COLLABORATIVE LEARNING
ONLINE RESOURCES



LANGUAGES
ENGLISH



APPLICATION DEADLINE
20 SEPTEMBER 2019

WHAT

WHAT TOPICS DOES THIS COURSE COVER?

- **Identifying theories of change** and impact pathways of social protection systems
- **Administrative and household survey data** for analysis of social protection coverage and adequacy
- **Poverty and inequality measurement** using microdata
- **Microsimulation and cost-effectiveness analysis:** including tax-benefit microsimulation and assessment of local economy multipliers
- **Impact evaluation** using national household survey data and scheme-specific surveys

WHAT WILL I BE ABLE TO DO?

- Identify the core outcomes, indicators and theories of change for assessment of social protection schemes and systems
- Design and manage impact assessment processes, including assessing appropriate analytical approaches and data sources
- Interpret results from data analysis and distil findings into accessible and compelling formats for policy maker



This course is one of four eligible courses for the **Diploma For Social Protection Analysts**. To achieve the Diploma, successful candidates must complete three of four courses within a five year period, and undertake a capstone assessment.

WHY

WHY SHOULD I JOIN?

- Put learning into practice through an **Integrated Applied Exercise** focused on your own national context
- Participants join and interact with a **diverse network of professionals** engaging in issues of impact assessment of social protection
- The course uses a **mix of training methods**: lectures, plenary discussions, good practices, case studies, group work, and individual exercises.
- Take a step towards achieving the **ITCILO Diploma for Social Protection**, a new accreditation for the next generation of social protection practitioners

WHO

WHO TAKES THIS COURSE?

The course is designed for practitioners who already have a number of years of work experience in social protection and are seeking to strengthen knowledge and skills in relation to impact assessment. Typical participants would be professionals from government ministries, social security institutions, social partners, UN agencies, non-governmental organisations, research institutes and consultancy firms. Participants should hold bachelor or advanced degrees and have a solid quantitative background.

HOW

The course consists of 120 total hours of learning, broken up into three phases.

- **Pre-course** (10 hours): Self-guided study through the online eCampus platform. Includes a pre-course assessment.
- **Residential week** (100 hours): 10-days of intensive training at the ITCILO in Turin, including developing an individual presentation.
- **Post-course assignment** (10 hours): Individual assignment applying learning from the course to a national context.

HOW TO APPLY

Find the application form at [/bit.ly/2MnjoFp](https://bit.ly/2MnjoFp) and apply before **20 September 2019**.

PRICE

Tuition: €2,395
Subsistence: €1,400
Total: €3,795

CAMPUS LIFE

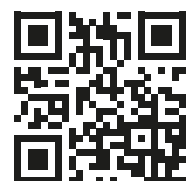
The green campus with modern training facilities makes a unique space for learning

LEARN DIFFERENTLY

Innovative training methodologies and integrated use of digital learning technology

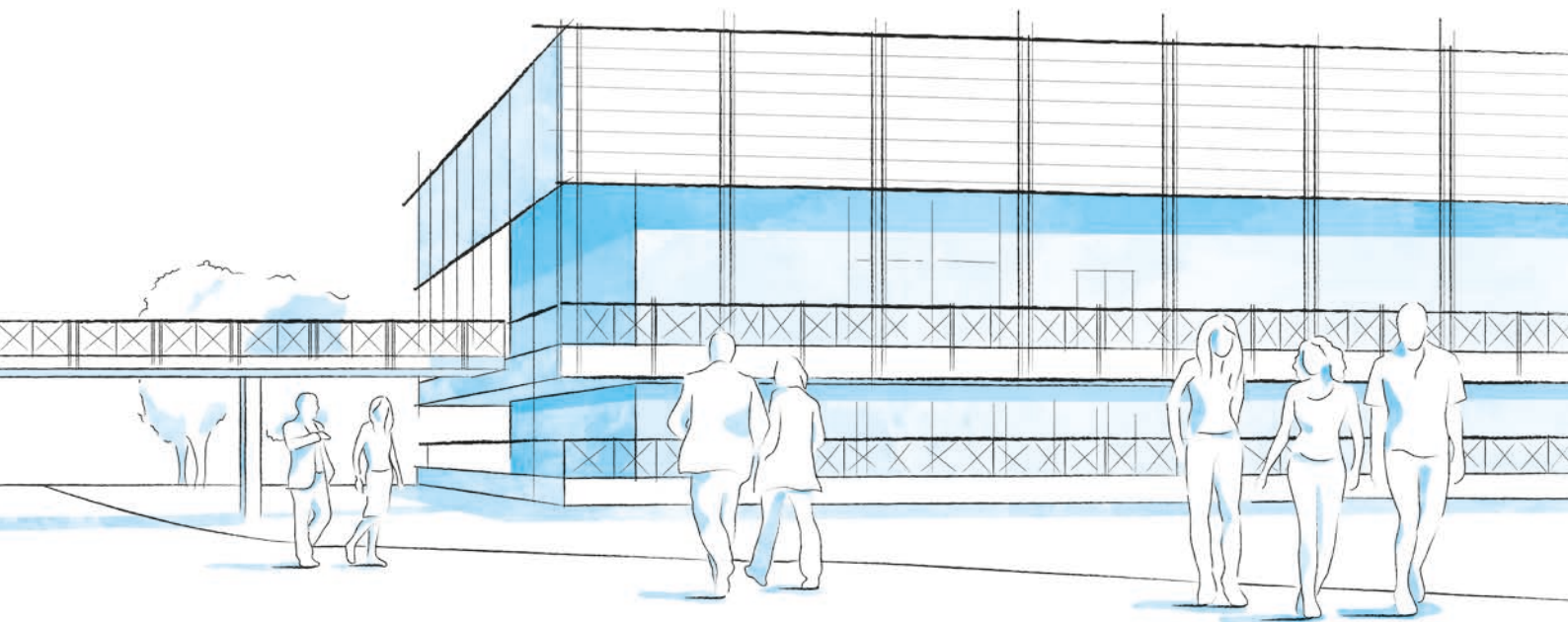
A TRAINING PARTNERSHIP

Experts in impact assessment from ILO, Development Pathways and UNICEF Innocenti.



SCAN THE QR CODE
OR VISIT

bit.ly/2TOgQTp



CAMPUS LIFE

A THRIVING UNITED NATIONS CAMPUS AND COMMUNITY OF PROFESSIONAL PEOPLE FROM AROUND THE WORLD

- **Three organizations** from the United Nations system on campus
- **More than 300 training courses** and activities in a stimulating international environment
- **Thousands of participants** from all over the world

ENVIRONMENT AND SURROUNDINGS

Grab a campus bicycle and explore the Turin Centre.

Located in a leafy park on the banks of the Po River, it's a great place for study and collaboration. Experience innovative learning and training methods in modern classrooms equipped with simultaneous translation services.

HOUSING, DINING, AND MORE

Comprising more than 280 private dormitories, the **Turin Campus provides a broad range of services for course participants and partners** including a free-flow restaurant, bank, travel agency, laundromat, post office, gym, medical services and a reception desk open 24/7.

COMMUNITY ENGAGEMENT AND DIVERSITY

Participants can enjoy social events organized by the Turin Centre as well as by their course facilitators.

Whether on or off campus, people from different cultural backgrounds have the opportunity to listen to live music together, cook and share traditional foods, or team up to play games and network.

INFO

FOR FURTHER INFORMATION PLEASE CONTACT

International Training Centre of the ILO

Programme on Social Protection,
Governance and Tripartism (SPGT)
Viale Maestri del Lavoro, 10
10127 Turin – Italy

spgt@itcilo.org
www.itcilo.org

COURSE CODE: A9012025

Made of paper awarded the European Union Eco-label,
reg.nr FR/011/002, supplied by International Paper. 